

106 Image

A 7 oz. 60% cotton/40% polyester pique knit golf shirt with pocket. Constructed with a clean-finished placket and bottom hem with side vents, and an extended tail. The half-moon yoke and double-needle stitched seams add great style and durability.

MODEL



SIZES:

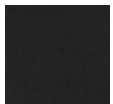
All Colors:

S | M | L | XL | 2XL | 3XL | 4XL | 5XL | 6XL

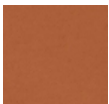
LT | XLT | 2XLT | 3XLT | 4XLT | 5XLT | 6XLT



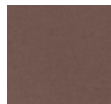
COLORS



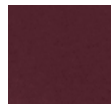
Black



Burnt Orange



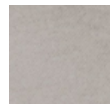
Brown



Dark Maroon



Forest Green



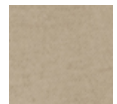
Heather Gray



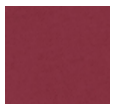
Royal



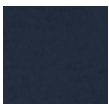
Jade



Khaki



Maroon



Navy



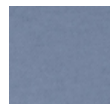
Purple



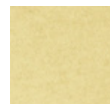
Red



Sand



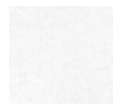
Slate Blue



Sunflower



Sage



White

SIZE CHART

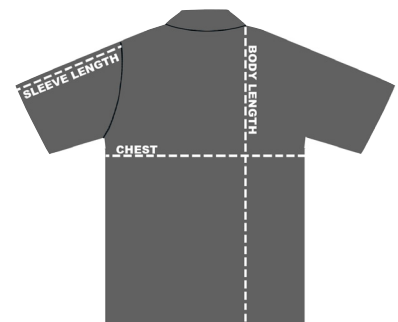
HOW TO MEASURE:

Smooth out wrinkles and lay garment flat on a table before measuring.

CHEST – Measure from 1" below armhole straight across chest.

SLEEVE LENGTH – Measure from top of armhole to sleeve opening.

BODY LENGTH – Measure from high point shoulder to sweep opening.



SIZES (Measurement in inches)	S	M	L	XL	2XL	3XL	4XL	5XL	6XL
CHEST (1" below armhole)	20.5	22.5	24.5	26.5	28.5	30.5	31.5	32.5	33.5
SLEEVE LENGTH (From top of armhole)	10.5	11	11.5	12	12.5	13	13.5	14	14.5
FRONT BODY LENGTH (From high point shoulder)	29	30	31	32	33	34	34.5	35	35.5
TALL SIZES (Measurement in inches)	LT	XLT	2XLT	3XLT	4XLT	5XLT	6XLT		
CHEST (1" below armhole)	24.5	26.5	28.5	30.5	31.5	32.5	33.5		
SLEEVE LENGTH (From top of armhole)	13.5	14	14.5	15	15.5	16	16.5		
FRONT BODY LENGTH (From high point shoulder)	33	34	35	36	36.5	37	37.5		