

# FL7278 Layna Jacket



## Women's Double-Knit Jacket

- Midweight 7.4 oz. polyester double-knit front and back body
- 9.5 oz. 92% polyester/8% spandex sleeves, side panels and collar
- Two invisible zipper pockets along front princess seams
- Reverse placket zipper with chin guard
- Raglan sleeves with thumbholes
- Binding along sweep and collar

## SIZES

XS | S | M | L | XL | 2XL | 3XL | 4XL



MODEL



BACK



## COLORS



BLACK

MIDNIGHT  
CHARCOAL

SKYDIVER BLUE

## SIZE CHART

### HOW TO MEASURE:

Smooth out wrinkles and lay garment flat on a table before measuring.

#### CHEST

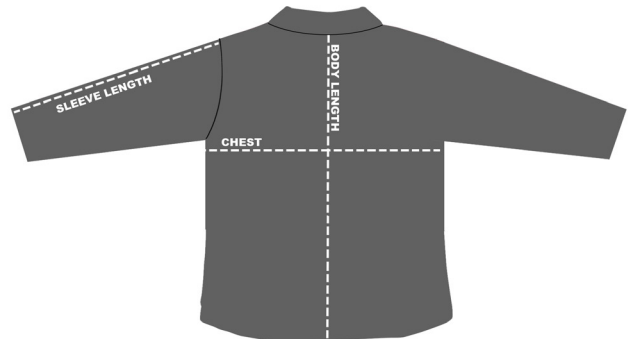
Measure from 1" below armhole straight across chest.

#### SLEEVE LENGTH

Measure from top of armhole to sleeve opening.

#### BACK BODY LENGTH

Measure from center back to sweep opening.



SIZES (Measurement in inches)	XS	S	M	L	XL	2XL	3XL	4XL
CHEST (1" below armhole)	16	18	20	22	24	26	28	30
SLEEVE LENGTH (from top of armhole)	26	26	27	27	27.5	27.5	28	28
BACK BODY LENGTH (from center back)	24	25	26	27	28	29	30	31