

J1480 Alden

Men's Midweight Nylon/Fleece Jacket

- Windproof/water-resistant polyester shell
- 8 oz. poly micro fleece body lining with nylon lined sleeves
- Concealed hood, two zippered pockets and elastic cuffs
- Open bottom with adjustable drawcord
- **EmbAccess™ system** for clean embroidery



MODEL



BACK



SIZES

S | M | L | XL | 2XL | 3XL | 4XL



COLORS



BLACK/BLACK



GRAY/BLACK



BRILLIANT BLUE/
BLACK



NAVY/NAVY



RED/BLACK

SIZE CHART

HOW TO MEASURE:

Smooth out wrinkles and lay garment flat on a table before measuring.

CHEST

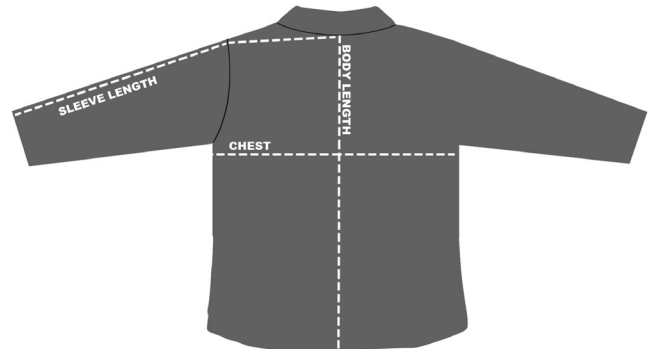
Measure from 1" below armhole straight across chest.

SLEEVE LENGTH

Measure from center back, to top of armhole to sleeve opening.

BACK BODY LENGTH

Measure from center back to sweep opening.



SIZES (Measurement in inches)	S	M	L	XL	2XL	3XL	4XL
CHEST (1" below armhole)	22	23	24.5	26	28	30	32
SLEEVE LENGTH (three point measurement)	36.5	37.5	38	38.5	39	39.5	40
BACK BODY LENGTH (from center back)	27	28	29	30	31	32	33