

J8260 Canby

Men's Quilted Puffer Jacket

- Windproof/water-resistant nylon shell
- 4.8 oz. hand-stuffed polyfill quilted lining
- Non-quilted front yoke, collar and side panels
- Two zippered pockets, bound cuffs and draw-cord hem

SIZES:

S | M | L | XL | 2XL | 3XL | 4XL



MODEL



BACK



COLORS



Black



Brilliant Blue



Gray



Navy

SIZE CHART

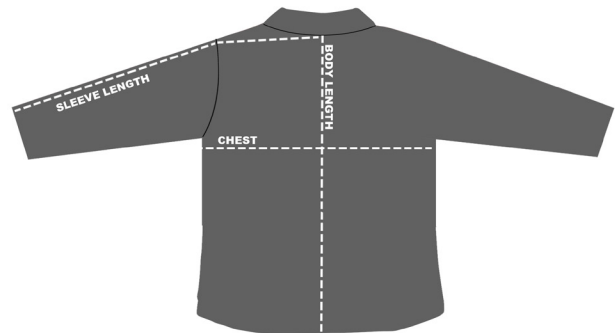
HOW TO MEASURE:

Smooth out wrinkles and lay garment flat on a table before measuring.

CHEST – Measure from 1" below armhole straight across chest.

SLEEVE LENGTH – Measure from center back, to top of armhole to sleeve opening.

BACK BODY LENGTH – Measure from center back neck to sweep opening.



J8260 Canby

| SIZE (Measurement in inches) | S | M | L | XL | 2XL | 3XL | 4XL |
|--|------|------|------|------|------|------|------|
| CHEST (1" below armhole) | 21.5 | 22.5 | 24 | 25.5 | 27.5 | 29.5 | 31.5 |
| SLEEVE LENGTH (three point measurement) | 36.5 | 37.5 | 38.5 | 39.5 | 40.5 | 40.5 | 41 |
| BACK BODY LENGTH (from center back neck) | 26.5 | 27.5 | 28.5 | 29.5 | 30.5 | 31.5 | 32.5 |