

# JL6355 Odessa



## Women's Bonded Soft Shell Hooded Jacket

- Stretch windproof/water resistant 96% polyester/4% spandex shell
- Bonded anti-pilling micro fleece lining with breathable membrane
- Brushed tricot lined welt pockets and fleece lined chin guard
- Elastic-bound cuffs and drop tail sweep with adjustable drawcord

### SIZES

XS | S | M | L | XL | 2XL | 3XL | 4XL



MODEL



BACK



## COLORS



BLACK/BLACK

CHARCOAL/  
BLACK

MOUNTAIN BLUE/  
NAVY

## SIZE CHART

### HOW TO MEASURE:

Smooth out wrinkles and lay garment flat on a table before measuring.

#### CHEST

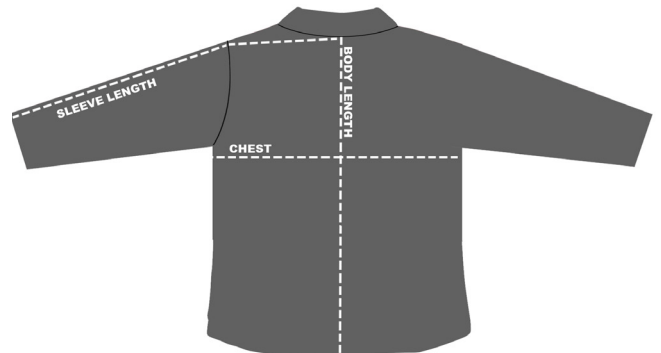
Measure from 1" below armhole straight across chest.

#### SLEEVE LENGTH

Measure from center back to top of armhole to sleeve opening.

#### BACK BODY LENGTH

Measure from center back to sweep opening.



SIZES (Measurement in inches)	XS	S	M	L	XL	2XL	3XL	4XL
CHEST (1" below armhole)	18.5	19.5	21.5	23.5	25.5	27.5	29.5	31.5
SLEEVE LENGTH (three point measurement)	32	33	33.5	34	35	35.5	36	36.5
BACK BODY LENGTH (from center back)	25.5	26.5	27.5	28.5	29.5	30.5	31.5	32.5