



JL8260 Lacey

Women's Quilted Puffer Jacket

- Windproof/water-resistant nylon shell
- 4.8 oz. hand-stuffed polyfill quilted lining
- Non-quilted front yoke, collar and side panels
- Two zippered pockets, bound cuffs and slight drop tail sweep

SIZES:

XS | S | M | L | XL | 2XL | 3XL | 4XL



MODEL



BACK



COLORS



Black



Brilliant Blue



Gray



Navy

SIZE CHART

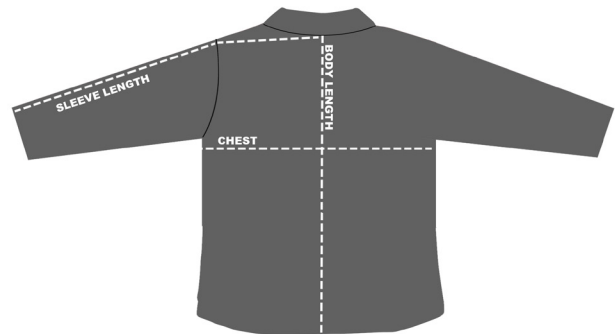
HOW TO MEASURE:

Smooth out wrinkles and lay garment flat on a table before measuring.

CHEST – Measure from 1" below armhole straight across chest.

SLEEVE LENGTH – Measure from center back, to top of armhole to sleeve opening.

BACK BODY LENGTH – Measure from center back neck to sweep opening.



JL8260 Lacey

SIZE (Measurement in inches)	XS	S	M	L	XL	2XL	3XL	4XL
CHEST (1" below armhole)	19	20	21	23	25	27	28	30
SLEEVE LENGTH (three point measurement)	31.75	32.25	33.25	34.25	35.25	35.75	36.25	36.75
BACK BODY LENGTH (from center back neck)	26	27	28	29	30	31	32	33