

LB079 Alexandra

- Split Neck Top
- 6.7 oz. 95% rayon/5% spandex
 - Ultra soft knit jersey
 - Faux chest pockets
 - Buttoned cuffs, rounded sweep

SIZES:
XS | S | M | L | XL | 2XL | 3XL | 4XL



lilac bloom®
by jennifer cole

MODEL



BACK



COLORS



Black



Green Aqua



Olive



Red

SIZE CHART

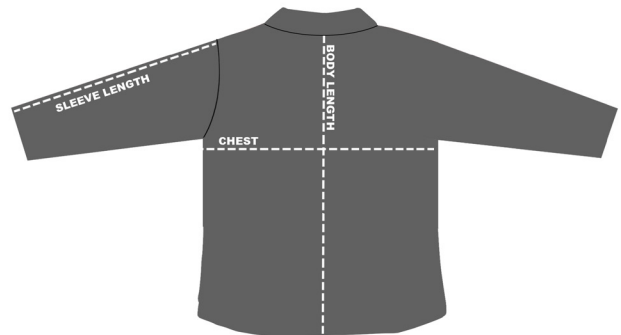
HOW TO MEASURE:

Smooth out wrinkles and lay garment flat on a table before measuring.

CHEST – Measure from 1" below armhole straight across chest.

SLEEVE LENGTH – Measure from top of armhole to sleeve opening.

BODY LENGTH – Measure from center back of neck to sweep opening.



LB079 Alexandra

SIZE (Measurement in inches)	XS	S	M	L	XL	2XL	3XL	4XL
CHEST (1" below armhole)	16.75	18.25	19.75	21.25	23.25	25.25	27.25	29.25
SLEEVE LENGTH (from top of armhole)	23.25	23.5	23.75	24	24.25	24.5	25	25
BODY LENGTH (from center back)	25	25	26	26.5	27.5	28.5	29.5	30