

LB755 Ashley

Women's 5.6 oz. 96% cotton/4% spandex short sleeve woven shirt. Pleats along front body add interest and provide a flattering fit. Fabric's subtle sheen and ruching along front shoulders adds a feminine touch. Stylish two-button cuff.

SIZES:
XS | S | M | L | XL | 2XL | 3XL | 4XL

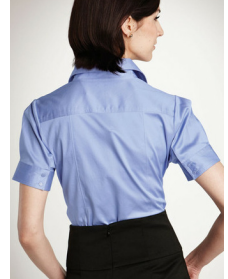


lilac bloom®
by jennifer love

MODEL



BACK



COLORS



Black



Bright Lilac



Pacific Blue



Sand



White

LB755 Ashley

SIZE CHART

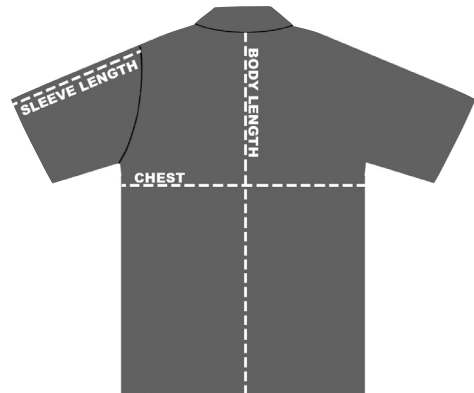
HOW TO MEASURE:

Smooth out wrinkles and lay garment flat on a table before measuring.

CHEST – Measure from 1" below armhole straight across chest.

BODY LENGTH – Measure from center back of neck to sweep opening.

SLEEVE LENGTH – Measure from top of armhole to sleeve opening.



SIZE (Measurements in inches)	XS	S	M	L	XL	2XL	3XL	4XL
CHEST (1" below armhole)	18	19.5	21	22.5	24	25.5	27.5	29.5
BODY LENGTH (from center back neck)	24.5	25.5	26.5	27.5	28.5	29.5	30.5	31.5
SLEEVE LENGTH (from top of armhole)	8.25	8.75	9.25	9.75	10.25	10.75	11.25	11.75