

LB757 Meredith

Women's 5.1 oz. 96% polyester/4% spandex long sleeve open neck woven shirt. Bust and front vertical darts and back princess seams provide a flattering fit.

SIZES:

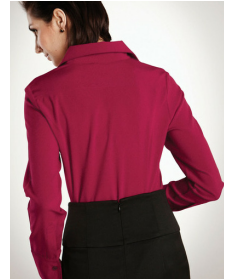
XS | S | M | L | XL | 2XL | 3XL | 4XL



MODEL



BACK



COLORS



Black

Deep Scarlet

Deep Teal

Eggplant

French Blue

Soft Orchid

White

Warm Khaki

LB757 Meredith

SIZE CHART

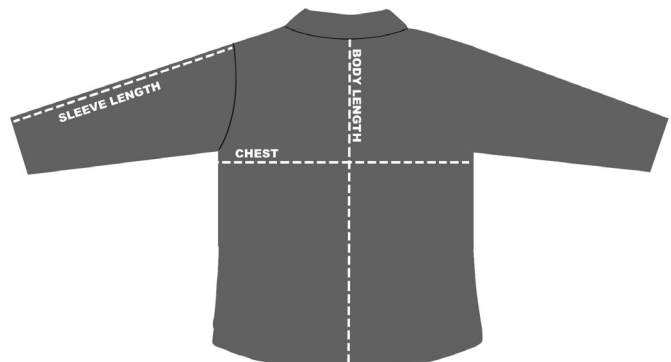
HOW TO MEASURE:

Smooth out wrinkles and lay garment flat on a table before measuring.

CHEST – Measure from 1" below armhole straight across chest.

BODY LENGTH – Measure from center back neck to sweep opening.

SLEEVE LENGTH – Measure from top of armhole to sleeve opening.



SIZE (Measurements in inches)	XS	S	M	L	XL	2XL	3XL	4XL
CHEST (1" below armhole)	18	19.5	21	23	25	27	29	31
BODY LENGTH (from center back neck)	24	25	26	27	28	29	30	31
SLEEVE LENGTH (from top of armhole)	23.5	24	24.5	25	25.5	26	26.5	27